

Cboe LIS*: Powered by BIDS

*Cboe LIS is operated by Cboe Europe Equities. BIDS offers connectivity to Cboe LIS via BIDS Trader.



ONE LIBERTY PLAZA, 23RD FLOOR, NEW YORK, NY 10006
212.618.2060 | 877.566.2437 | BIDSTRADING.COM

NOVEMBER 2021 TRADING STATISTICS

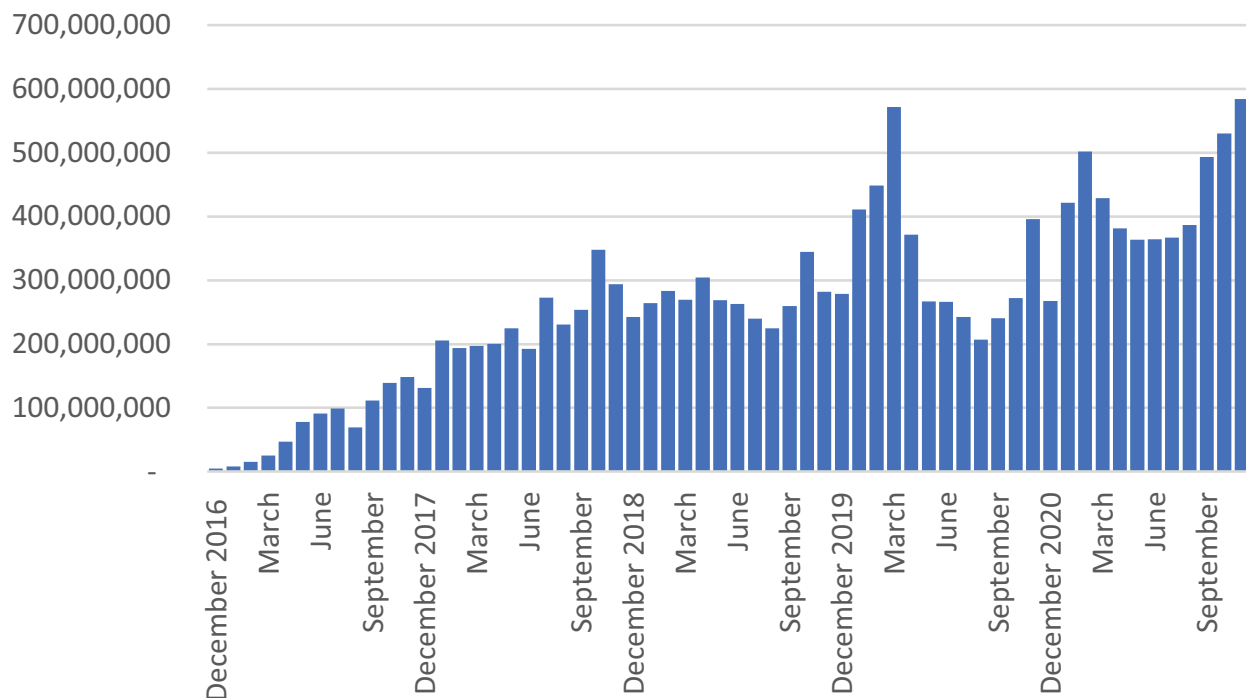
Total Traded Value	€12,848,759,677 RECORD
Average Daily Value	€584,034,531 RECORD
Average Trade Value (buy-side)	€1,274,074
Largest Trade	€44,732,330

Cboe LIS volume is available on the Cboe website at http://markets.cboe.com/europe/equities/market_statistics/.

Cboe LIS Growth in Volume

- 221 buy-side firms and 25 sell-side firms connected to Cboe LIS

€ Value Traded

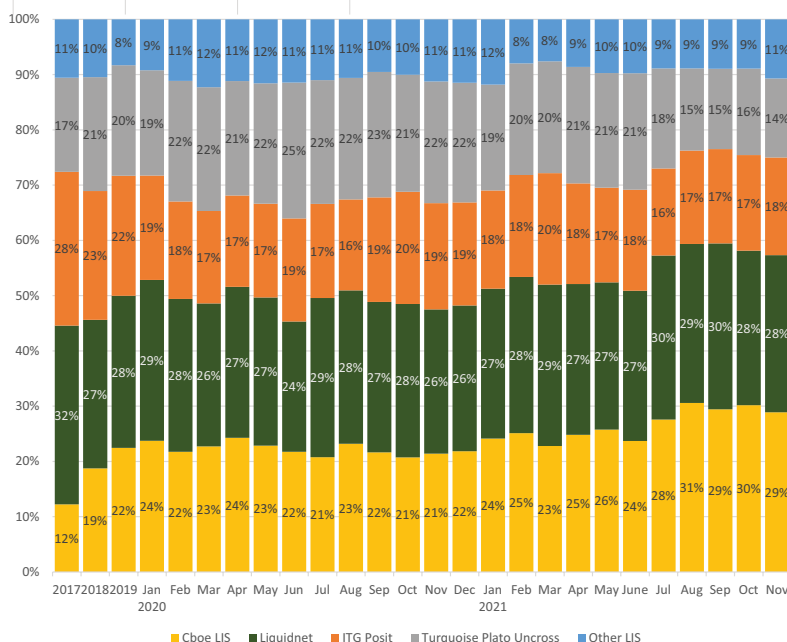


Market	Cboe LIS Value	Breakdown
London	2,807,377,455	21.85%
Frankfurt	2,243,999,946	17.46%
Paris	2,153,462,713	16.76%
Amsterdam	1,300,154,991	10.12%
Zurich	1,079,105,038	8.40%
Stockholm	816,504,353	6.35%
Copenhagen	649,991,959	5.06%
Madrid	522,162,234	4.06%
Milan	496,534,163	3.86%
Oslo	194,441,280	1.51%
Helsinki	174,582,731	1.36%
Brussels	166,216,418	1.29%
Dublin	119,699,376	0.93%
Vienna	74,091,839	0.58%
Lisbon	50,435,181	0.39%

TRADE VALUE BY COUNTRY OF LISTING - NOVEMBER 2021

SHARE OF MARKET WIDE LIS BY VENUE - NOVEMBER 2021*

*Source of data: Big XYT, November 30, 2021



DESIGNATED BROKERS (EU-based Users)

- ABG Sundal Collier
- Baader Bank AG
- Bank of America Merrill Lynch
- Barclays Capital
- Cannacord Genuity
- Credit Suisse
- Danske Bank*
- DNB Bank ASA*
- Equita*
- Exane BNP Paribas
- Goldman Sachs
- HSBC
- Instinet Europe
- Jefferies
- JP Morgan Securities
- Kepler Cheuvreux
- Liquidnet
- Mediobanca*
- Metzler Bank*
- Morgan Stanley
- Nordea Bank AB*
- Oddo BHF
- RBC Europe Ltd.
- Redburn
- Sanford C. Bernstein Ltd.
- Societe Generale
- UBS
- Virtu ITG Europe

INTRODUCING BROKERS (US-based Users)

- ABG Sundal Collier
- Auerbach Grayson
- Baader Bank AG
- Bank of America Merrill Lynch
- Banco Santander S.A.
- Barclays
- Cabrera Capital Markets, LLC
- Credit Suisse
- DNB Markets
- Exane BNP
- Instinet
- Jefferies
- JP Morgan Securities
- Kepler Cheuvreux
- Mediobanca
- Mischler Financial Group
- Morgan Stanley
- Redburn
- Sanford C. Bernstein & Co, LLC
- UBS

INTEGRATION PARTNERS

- Advent Moxy
- Bloomberg EMSX
- Charles River Development
- Enfusion
- Eze Eclipse
- Fidessa Buy-side OMS
- FlexTrade's FlexTRADER
- InfoReach
- Instinet Newport
- ITG's Triton
- JP Morgan Neovest
- Linedata Longview & Trader+
- LiquidityBook LLC
- Macgregor XIP
- Portware
- SS&C Eze
- TradingScreen Inc.

*Availability limited to certain markets – please ask sales coverage for details.