

BIDS Trading®

Monthly News

BIDS Trading is a registered broker-dealer and the operator of the BIDS ATS, which is designed to bring counterparties together to anonymously trade blocks of stock.

MARCH 2026 TRADING STATISTICS

Average Daily Volume*	240.2 million shares
Average Block† Execution Size	22,700 shares
Blocks† Traded as % of Total Traded Volume	23%
Block Trades Larger Than 50k Shares	1,877
Average Daily Block† Volume	55.5 million shares

* Figures include all volume traded on the BIDS ATS and do not include any routed volume. Shares are double counted to include both sides of the transaction.
† A block is defined as 10,000+ shares.

FEATURE OF THE MONTH: Overtime Update

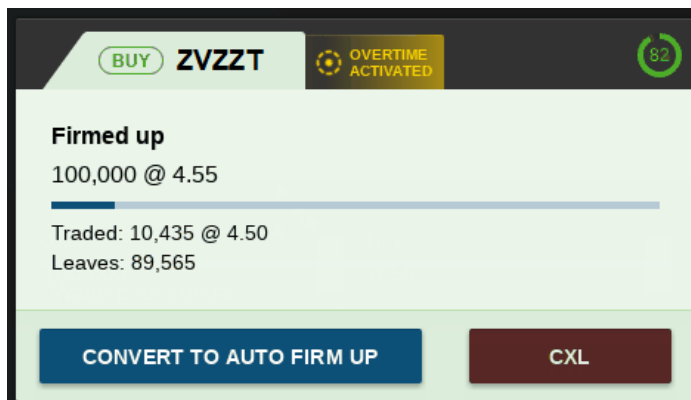
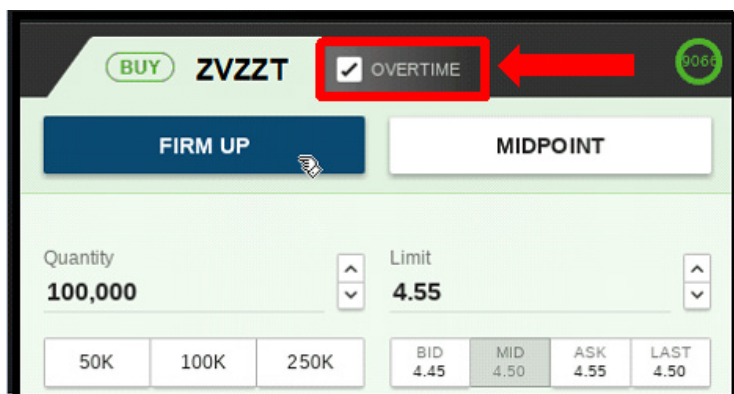
Access additional liquidity around a block print by enabling overtime.

FAQs

- When Overtime is enabled, BIDS invites will display a check box next to the symbol.
- Overtime reduces a User's minimum volume for up to 30 seconds after a print.
- All overtime trades are price protected at the print price except midpoint trades which round to the more aggressive half tick*.
- Trades that receive overtime executions upsize the original print by 15%.**
- Interest has been strong, 225 buy-side firms having enabled the feature.
- **NEW:** Overtime users will now seamlessly interact with orders from BIDS retail partners.

*Reg NMS requires penny limits in most covered securities

**BIDS ATS, March 2026



To activate the feature or if you have additional questions, please contact your BIDS sales representative.

SPONSORING BROKER/DEALER (*MWVBE Certified Broker)

Direct 100% of your trading costs in BIDS Trading to the sponsoring broker/dealer(s) of your choice.

- Academy Securities, Inc.*
- American Veterans Group, PBC*
- B. Riley FBR, Inc.
- Bancroft Capital, LLC*
- Bank of America
- Barclays
- Blaylock Van LLC*
- BMO Capital Markets
- Cabrera Capital Markets, LLC*
- Canaccord Genuity Inc.
- Capis
- CastleOak Securities*
- Citi
- CLSA Americas, LLC
- Cowen & Co.
- Daiwa Capital Markets America Inc.
- Drexel Hamilton*
- FBN Securities, Inc.
- Great Pacific Securities*
- Guggenheim Securities, LLC
- Guzman & Company*
- H.C. Wainwright & Co.
- Instinet, LLC
- Itau BBA Securities
- J.P. Morgan
- Jefferies
- JonesTrading
- Keefe, Bruyette & Woods
- Kepler Capital Markets Inc.
- KeyBanc Capital Markets Inc.
- Loop Capital Markets*
- Mischler Financial Group, Inc.*
- Monness, Crespi, Hardt & Co.
- Morgan Stanley
- National Bank of Canada Financial
- North South Capital LLC*
- Penserra Securities*
- Piper Sandler & Co.
- Redburn (USA) LLC
- Roberts & Ryan Inc.*
- Rosenblatt Securities
- Roth MKM
- Samuel A. Ramirez & Co.*
- San Blas Securities
- Siebert Williams Shank & Co., LLC*
- Stern Brothers & Co*
- Stifel Nicolaus
- StoneX Financial Inc.
- Strategas Securities
- Sturdivant & Co., Inc.*
- Susquehanna Financial
- Telsey Advisory Group*
- The Vertical Group
- Themis Trading LLC
- Tigress Financial Partners LLC*
- UBS
- Virtu Financial
- Wells Fargo Securities, LLC
- Westminster Research
- William Blair & Co.

INTEGRATION PARTNERS

- Advent Moxy
- Aladdin
- Bloomberg EMS & SSEOMS
- Charles River Development
- Enfusion
- Eze Eclipse
- Fidessa Buy-side OMS
- FlexTrade's FlexTRADER
- INDATA IPM
- InfoReach
- Instinet Newport
- JP Morgan's Neovest
- Linedata Longview & Trader+
- LiquidityBook LLC
- Portware
- Ridgeline
- SS&C Eze
- Tradeweb
- TradingScreen Inc.
- Virtu's Triton EMS & OMS

MARKET CAP & MARKET SECTOR

